

# PELLMEADOW OFFICE PARK



- ✓ Well-manicured gardens.
- ✓ 24-hour security,
- ✓ access control at entrances and electric fences.
- ✓ Proximity to major highways





# PELLMEADOW OFFICE PARK

EXCEPTIONAL FINISHES

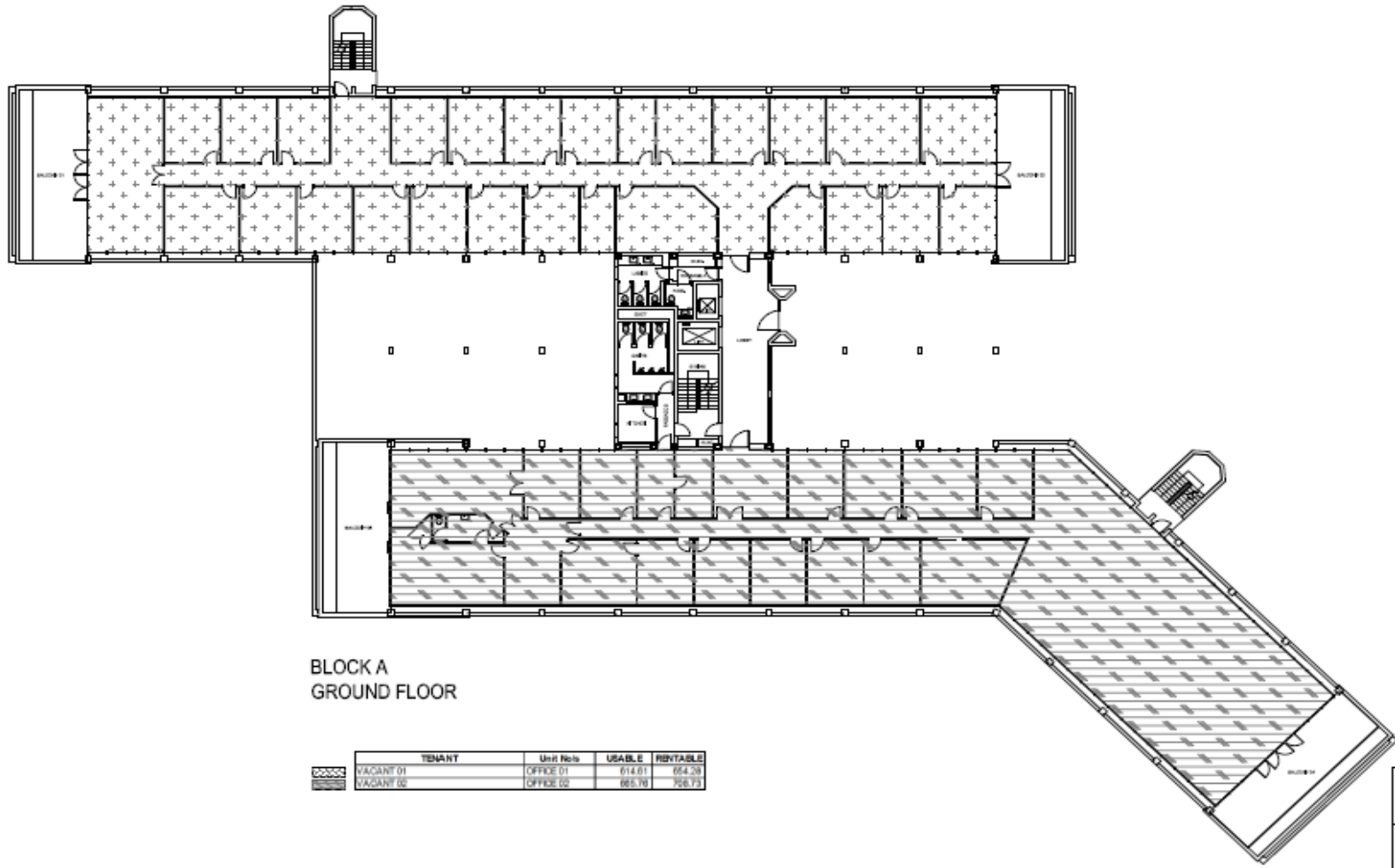




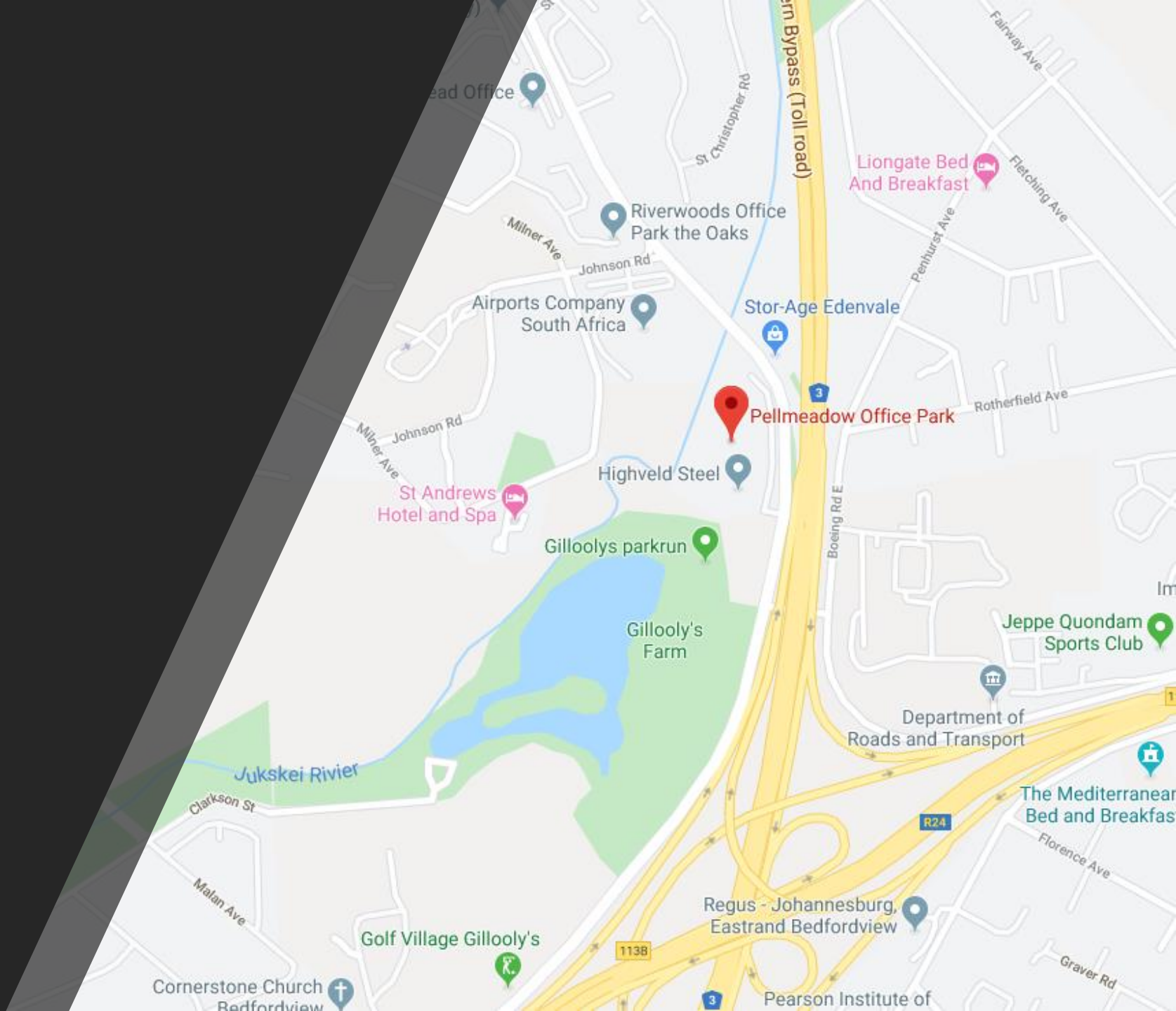




# FLOOR PLATES



# Locality Map Link





## Leasing Terms



- ✓ **Gross Rental: R110/m<sup>2</sup>**
- ✓ **2 months Beneficial Occupation**
- ✓ **2 month`s rent free over 1<sup>st</sup> 24 months**
- ✓ **TI Allowance: 1.25 months/year**

*Terms above are based on a minimum of 1000m<sup>2</sup> and 5-year lease term*

## Available Vacancies

- ✓ **6820.91m<sup>2</sup>**
- ✓ **Block A – Block C**

